

# Promotion of Sound Research Activities --- JSPS's Approach



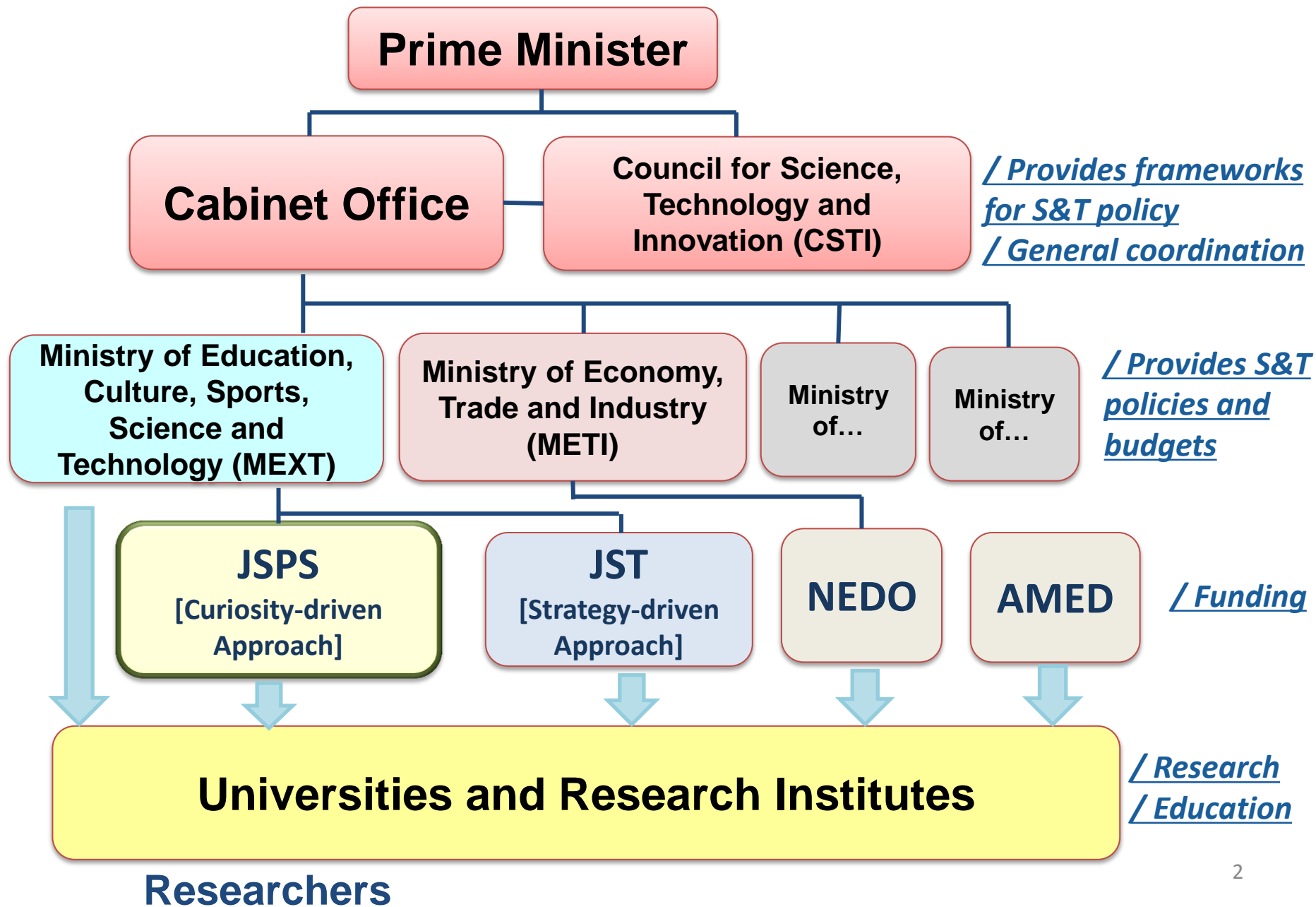
Yasuhiro Iye

Executive Director,

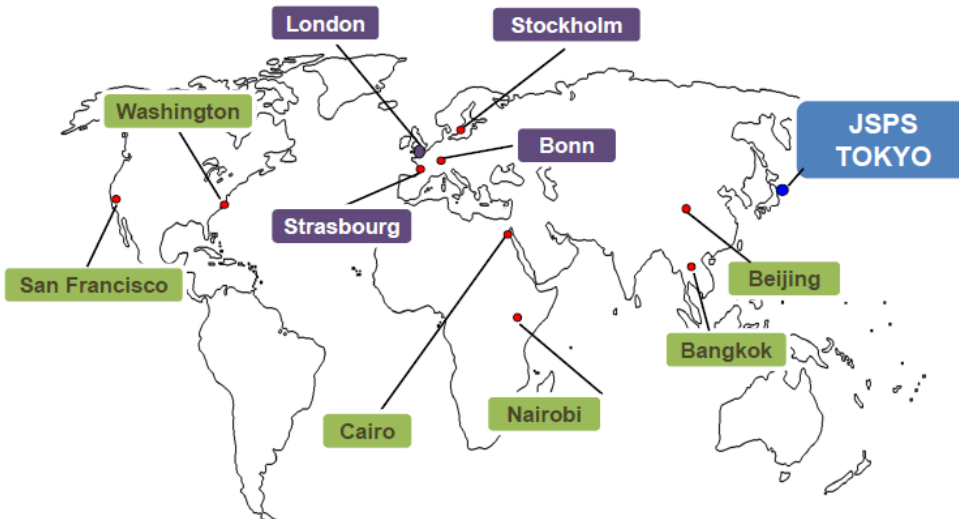
Japan Society for the Promotion of Science



# Research Funding Scheme in Japan



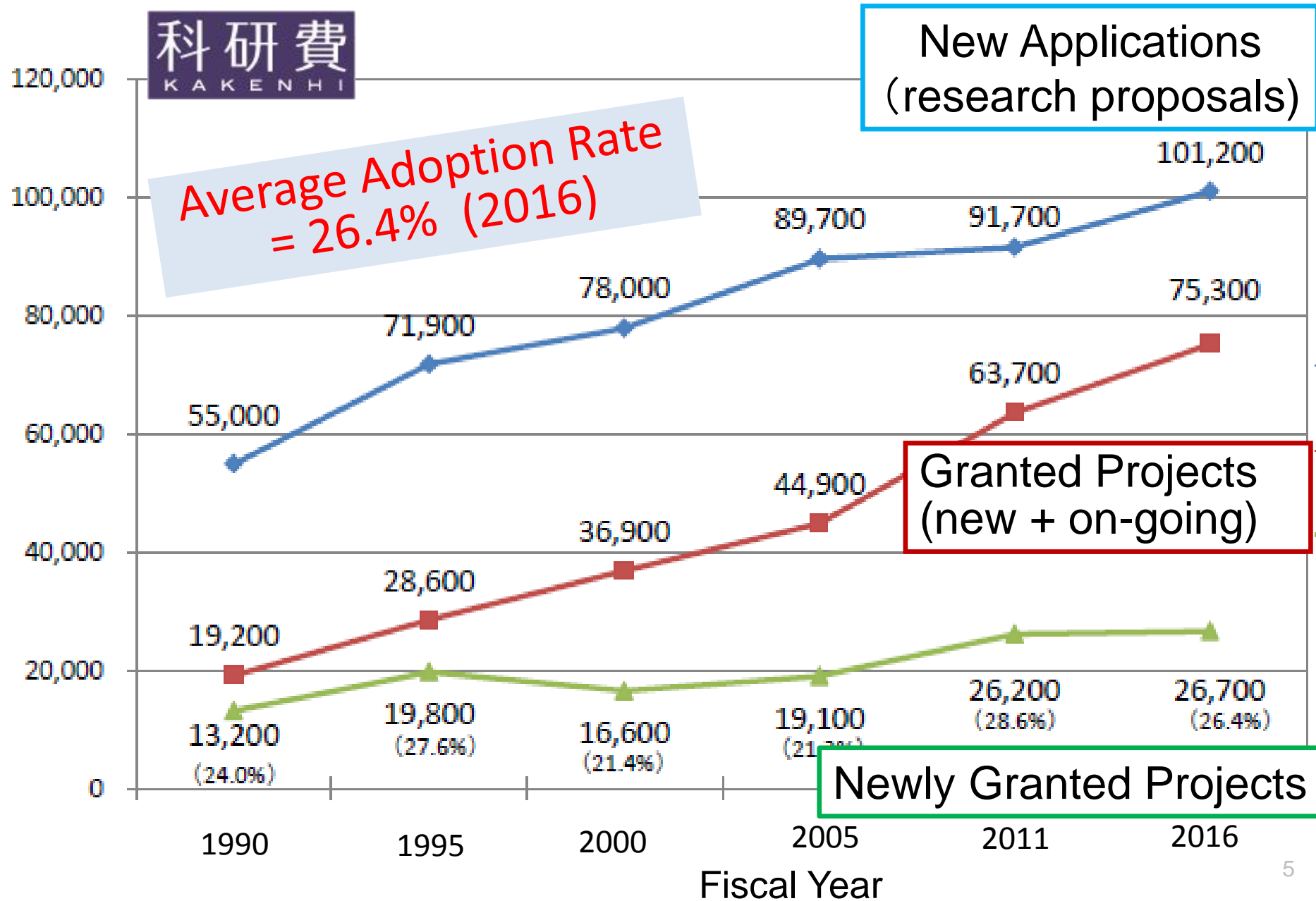
- to fund research projects  
**Grants-in-Aid (KAKENHI)**
- to nurture young scientists  
**JSPS Fellowship Programs**
- to promote international exchange **10 overseas offices**



# Grants-in-Aid for Scientific Research (KAKENHI)

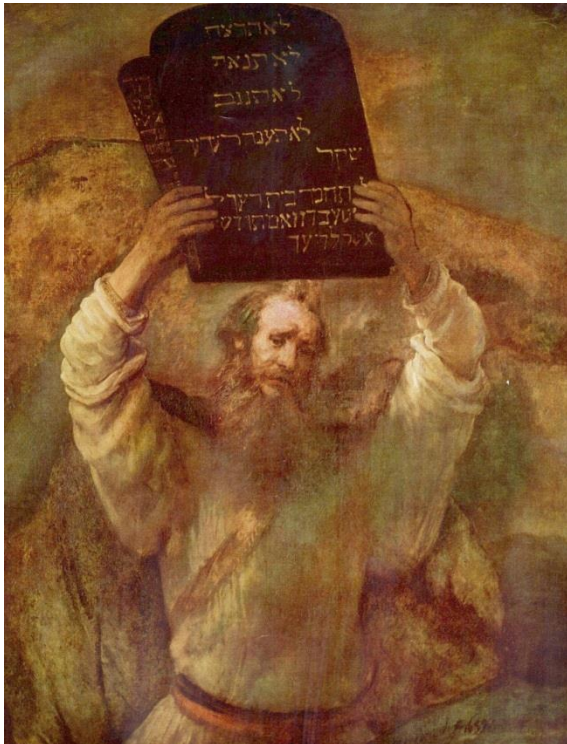
- ✓ Japan's biggest competitive research fund  
~230 billion yen/year (~2 billion US\$)
- ✓ Encompasses all research fields (humanities, social sciences and natural sciences)
- ✓ Bottom-up research project based on the applicant's original idea, planning and initiative
- ✓ Merit-based screening by peer review system

# 100,000 New Grant Applications/Year



# Three Commandments

The basic research ethics against misconduct (FFP) and other questionable research practice (QRP) are nothing other than commonsense moral codes, such as “**thou shalt not lie**” and “**thou shalt not steal**”.



Rembrandt van Rijn

**THOU SHALT NOT  
MAKE UP OR  
FIDDLE WITH DATA**

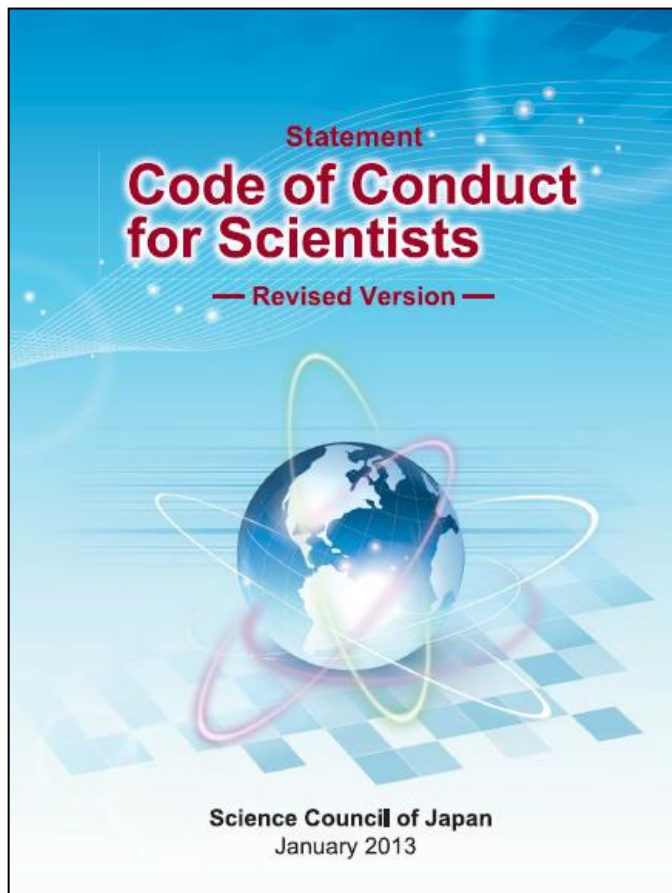
**THOU SHALT NOT STEAL  
ORIGINAL IDEAS OR  
WORKS OF OTHERS**

**THOU SHALT PLAY FAIR**

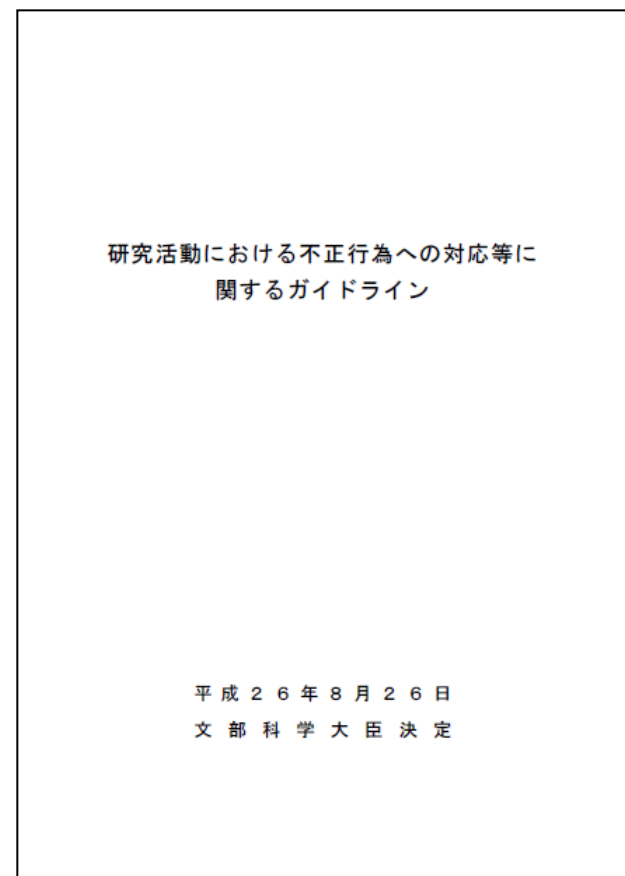


# Call for Attention

“Code of Conduct for Scientists”  
(revised version)  
Science Council of Japan (SCJ)



“Guideline on Countermeasures  
for Research Misconducts”  
MEXT



# Characteristic Research Misconduct in Different Fields

## <Life Science>

cosmetic surgery of image data  
improper statistical processing

## <Engineering>

falsification of test data

## <Medical & Pharmaceutical Science>

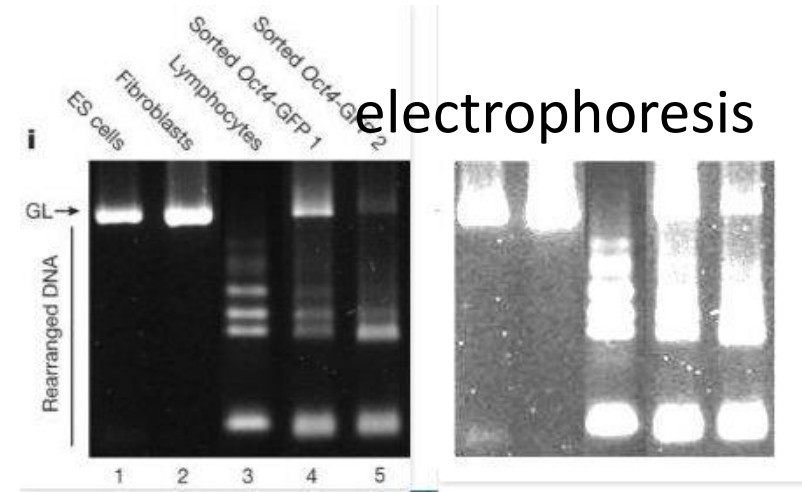
falsification of clinical trial data

## <Social Science>

manipulation of survey data

## <Humanity, Social Science>

plagiarism, improper quotation



Besides the overall call for attention, discipline-specific measures and good practices should be worked out by the research community.



# Education of Research Ethics



## e-Learning Course on Research Ethics (eL CoRE)

“the core”  
= the basic stance that every  
practicing researcher should  
embody

"For the Sound Development of Science-  
The Attitude of a Conscientious Scientist"  
aka **“the green book”**

# Rules in relation to KAKENHI funding

Completion of research ethics course (either by textbooks or e-learning) is the pre-requisite for a Grants-in-Aid applicant.

If research misconduct is suspected, the research institute should conduct investigation of the case without delay.


The individual who are judged as guilty of research misconduct is suspended from grant application for a prescribed period depending on the gravity of the misconduct.

# Proactive Measures

Every single misconduct takes a heavy toll of research resources and damages the social capital of science community.

There are neither panacea nor wonder drugs against research misconducts.

Proactive “health care” is the key.

- Cultivating ethical awareness by education
- Open research atmosphere
- Con + Science  Conscience  
concerned, concordant

# Thank you!



<http://www.jsps.go.jp/english/index.html>